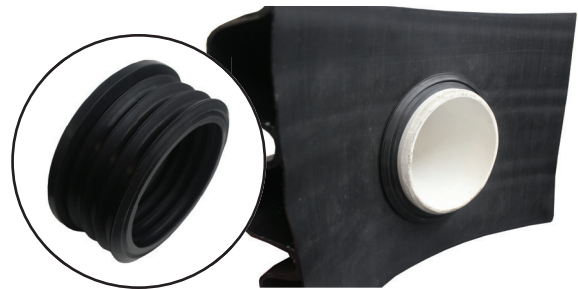




POLYLOK 4" COMPRESSION SEAL (3002-CS)

When a friction fit is important, you can count on the Polylok 4" compression seal. It is used to ensure a watertight connection when installing 4" SCH. 40 or SDR. 35 pipe into black ribbed pipe or IPEX pipe.

- Easy to install (no tools required)
- Accepts 4" SCH. 40 and SDR. 35 pipe
- Provides watertight connection
- Weather and corrosion resistant
- Requires no sealants



INSTALLATION INSTRUCTIONS:

1. USING A 5" HOLE SAW CUT A 5" HOLE ON THE RIBBED OR IPEX PIPE
2. GENEROUSLY CHAMFER THE 4" SCH. 40 OR SDR. 35 PIPE
3. LUBE THE PIPE AND SEAL WITH DISH-WASHING LIQUID OR A SILICONE BASED LUBRICANT
4. INSERT THE 4" SCH. 40 OR SDR. 35 PIPE USING A ROCKING MOTION

**POLYLOK 4" COMPRESSION SEAL
PART NO. 3002-CS
MATERIAL - RUBBER**

